

East Midlands

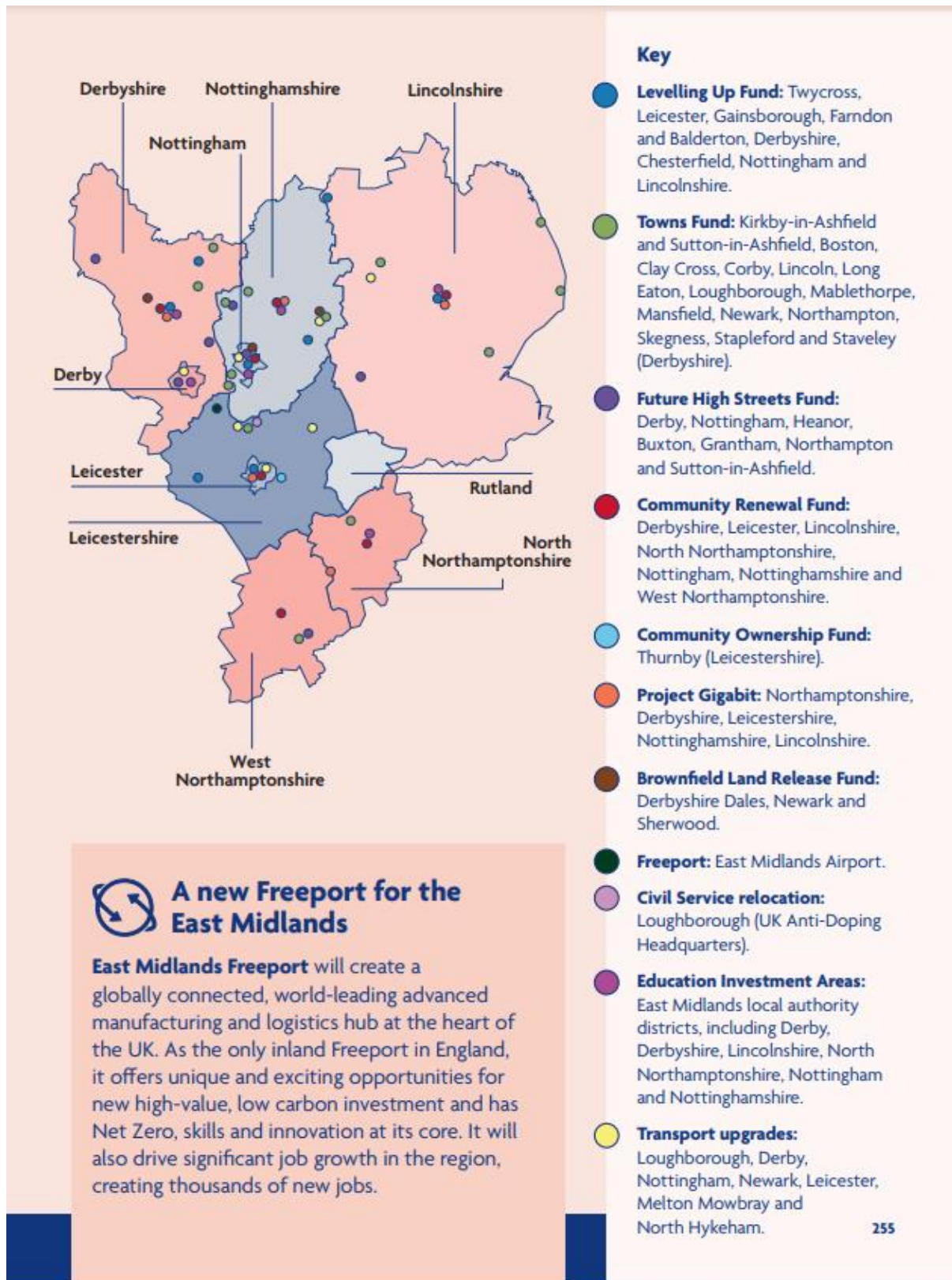
The East Midlands is already benefiting from investments to boost living standards, spread opportunity, restore local pride and empower local leaders.

An initial **£203m** of investment through Round 1 of the Levelling Up Fund is backing ten projects in the East Midlands. Transport enhancements include A16 road improvements between Boston and Spalding in Lincolnshire, completing the Newark Southern Link Road between Farndon and Balderton in Nottinghamshire, and a new junction on the A50 south of Derby in Derbyshire. Gainsborough Town Centre will benefit from a new cinema and a new science centre will be built at Twycross Zoo. In Leicester, the railway

station will be revitalised, high-quality office space will be provided in the city and new commercial spaces will be built at Pioneer Park to support economic growth. Stephenson Memorial Hall in Chesterfield will be remodelled and Nottingham will benefit from a programme to improve the streetscape to promote safe active travel across the city.

The Towns Fund is investing over **£346m** across 15 towns in the East Midlands including in Boston, Corby and Lincoln. Boston will see the creation of a new community hub at Boston railway station, Corby will see public realm improvements with parts of the town centre pedestrianised and Lincoln will benefit from regeneration of Cornhill Square, a key public space for the community.





The UK Government has been taking action to level up the East Midlands:



Empowering local leaders and communities

Derbyshire and Derby, Leicestershire, and Nottinghamshire and Nottingham invited to begin negotiations to agree new devolution deals.

£203m for 10 projects through the Levelling Up Fund, including in Twycross, Leicester, Gainsborough, Farnon and Balderton, Derbyshire, Chesterfield, Nottingham and Lincolnshire.

Over £346m invested in 15 Towns Fund deals including in Clay Cross, Staveley, Long Eaton, Boston, Mablethorpe, Skegness, Corby, Stapleford and Mansfield, to boost local economies, create jobs and new homes, transform public spaces, and revitalise cultural attractions.

£63m for seven high streets through the Future High Streets Fund to improve transport links, build new homes and transform underused spaces, including in Derby, Nottingham, Heanor, Buxton, Grantham, Northampton and Sutton-in-Ashfield.



Boosting productivity, pay, jobs and living standards

Local Growth Deals

are delivering major growth opportunities across the East Midlands. These include redevelopment of Nottingham's Southside area; support for Derby's Infinity Park; unlocking land for housing and access to the M1 in Loughborough; and the creation of a medical school at the University of Lincoln.

£400m of new funding for the British Business Bank's Midlands Engine Investment Fund.

£40m through the Transforming Cities Fund for Leicester, including a new Electric Bus Link to connect rail and bus stations with the city centre and over £169m for transport enhancements across Nottingham and Derby, including a new pedestrian and cycle crossing of the River Trent and improvements at Derby bus station.

Road upgrades including M1 Junctions 13-19 and 23, A38 Derby Junctions, A52 Nottingham Junctions, and improving capacity along the A46 Newark Bypass.

£387m for local roads maintenance between 2022-23 and 2024-25, and £75m for smaller transport improvement priorities through the Integrated Transport Block across the East Midlands.

£18m through the Strength in Places Fund across the Midlands for development of advanced ceramics requiring less energy usage, with partners including Rolls Royce, the University of Leicester and Loughborough University.

Gigabit broadband coverage in the East Midlands increased from 6% in November 2019 to 69% in January 2022, and is forecast to reach 70-80% by 2025.

299,720 new businesses created in the East Midlands between 2010 and 2020.

753,700 jobs were furloughed and protected in the East Midlands through the Coronavirus Job Retention Scheme.